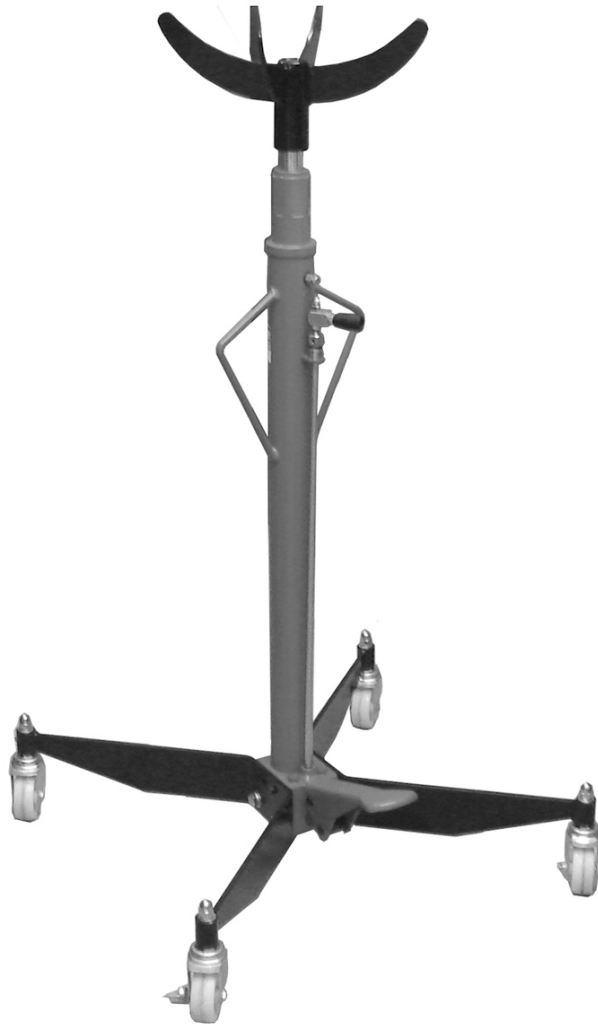


# CharniBoe®



## TRANSMISSION JACK

MODEL NO: CTJ30

PART NO: 7612605

## OPERATION AND MAINTENANCE INSTRUCTIONS

UK  
CA | CE

DL0922 Rev 3

---

## INTRODUCTION

---

Thank you for purchasing this CLARKE Transmission Jack, designed for use in the removal and installation of transmissions and differentials.

Before attempting to use this product, please read this manual thoroughly and follow the instructions carefully. In doing so you will ensure the safety of yourself and that of others around you, and you can look forward to your purchase giving you long and satisfactory service.

---

## GUARANTEE

---

This product is guaranteed against faulty manufacture for a period of 12 months from the date of purchase. Please keep your receipt which will be required as proof of purchase.

This guarantee is invalid if the product is found to have been abused or tampered with in any way, or not used for the purpose for which it was intended.

Faulty goods should be returned to their place of purchase, no product can be returned to us without prior permission.

This guarantee does not effect your statutory rights.

---

## SPECIFICATION

---

Rated Load	300 kg
Min Height with head	1235 mm
Max Height with head	2045 mm
Base size	630 x 630 mm
No of strokes from rest to max height	26
Distance per pump action	31 mm
Pump oil capacity	0.8 litres
Dimensions (L x W x H)	630 x 630 x 1235 mm (with saddle)
Weight	33 kg

---

## **SAFETY PRECAUTIONS**

---

1. Do not exceed the rated capacity of the jack.
2. Do not allow personnel to operate the jack unless they have read these safety precautions.
3. Ensure that the jack is in good working order. Have any damaged parts repaired or replaced immediately. Use genuine Clarke parts only. The use of unauthorised parts may be dangerous and will invalidate the guarantee.
4. Do not operate the jack if damaged.
5. Use the jack in a suitable, well lit work area.
6. Keep the work area clean and tidy and free from unrelated items.
7. Use the jack on level and solid ground, preferably concrete. Avoid soft/unmade ground as the jack may sink in.
8. Ensure the vehicle is securely and rigidly supported.
9. Check the transmission is centred on the jack saddle.
10. Ensure all non-essential persons keep a safe distance whilst the jack is in use.
11. Ensure there are no personnel or obstructions under the vehicle transmission before lowering.
12. Do not stand or work under the load until it secured by suitable means.
13. Ensure when lifting, that the jack and all parts of the load can be clearly seen.
14. Never climb on, or attempt to ride on the jack.
15. Use the jack for lifting transmissions only, NOT for supporting the weight of the vehicle.
16. Take care not to trap fingers in the moving parts of the jack.
17. Lower the load as much as possible before moving the jack. Do not transport loads in an elevated position.
18. Ensure that you can see the saddle and jacking point throughout the jacking operation in case there is any relative movement.
19. Never tamper with the product or modify it in any way, as this could prove to be dangerous and will invalidate the guarantee. Only use the product for the purpose for which it is intended.

20. Use appropriate safety equipment, such as protective footwear, when using this jack.
21. When replacing parts, use only those supplied by Clarke International. Refer to the parts list on page 10.
22. Ensure that the jack is properly maintained, and lubricated at all times, and that no rust or other forms of corrosion is allowed to weaken any part of it.
23. If the jack has been subjected to an abnormal load or shock, it should be removed from service immediately and fully inspected by qualified personnel, and passed as serviceable, before being used again.
24. When not in use, store the jack, fully lowered, in a safe, dry, childproof area.

***IMPORTANT: ALWAYS ensure that the centre of gravity of the load, is centred about the head section, before taking the full weight.***

## **SAFETY SYMBOLS**

The following safety symbols may be found on the product.



Wear foot protection

## **LIFTING OPERATIONS AND LIFTING EQUIPMENT REGULATIONS 1998**

This jack, depending on use, may fall within the scope of LOLER. It is the owner's responsibility to determine whether or not it does and, if so, to comply with any applicable requirements in LOLER, for having the jack thoroughly examined.

## **ENVIRONMENTAL PROTECTION**

1. Take care to ensure that if hydraulic oil is spilt that it is cleaned away using sand or treated with absorbent granules designed for the purpose.
2. Always make every effort to contain any spillage and prevent ingress into the local water course.

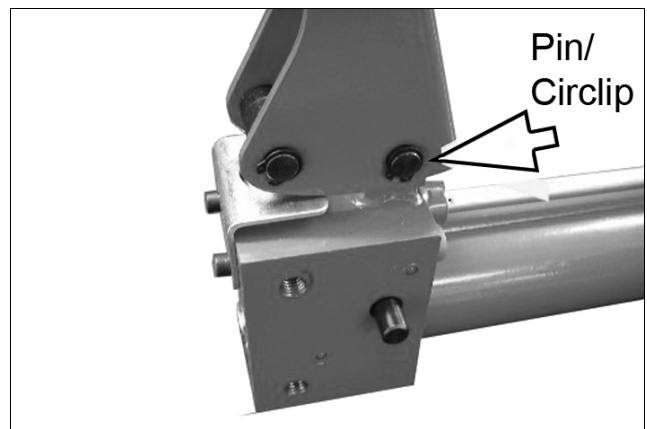
# UNPACKING & ASSEMBLY

Unpack the components on a clean flat area of hard standing, and ensure that all parts are present according to the packing list, as follows:

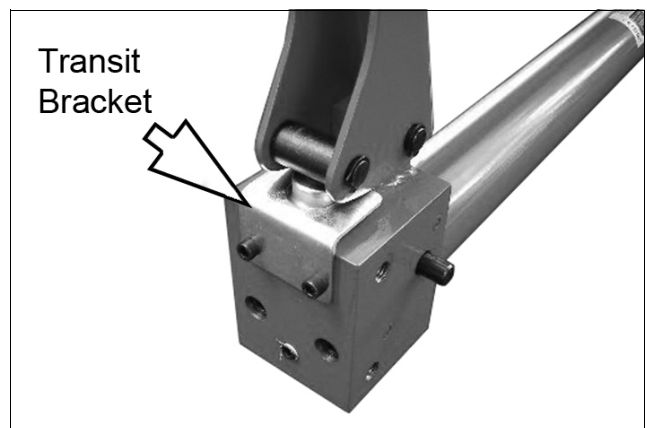
- 1 x Column Assembly complete
- 2 x Wheel brackets
- 2 x Castors with brake
- Foot Pedal
- 1 x Saddle
- 1 x Fixings Kit

Visually inspect all components to ensure that no damage was suffered in transit. Any damage should be reported to your CLARKE dealer immediately.

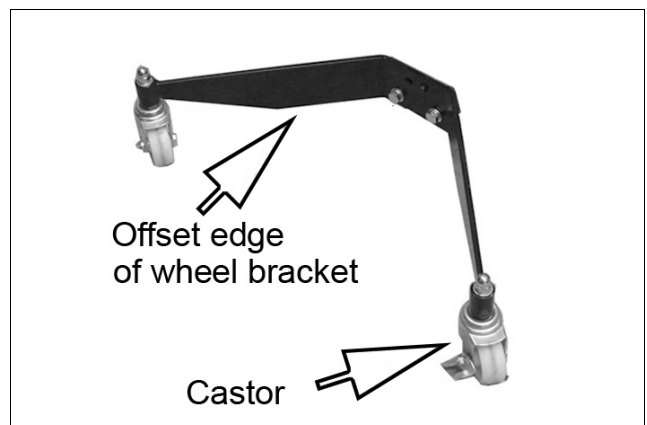
1. Fit the foot pedal to the base unit using the pivot pin and securing with the circlips at each end.



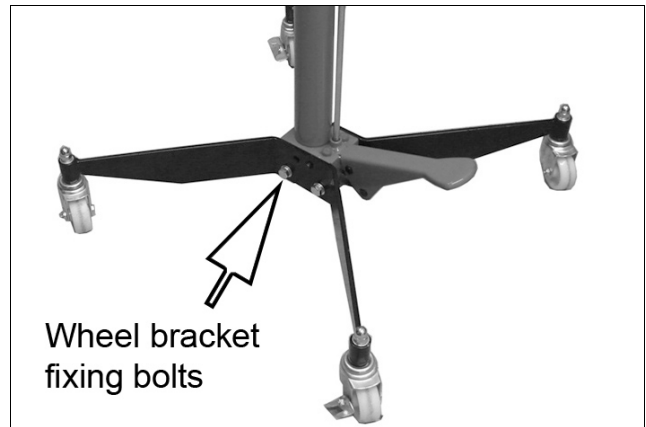
2. The pump piston transit bracket, which retains the pump piston, requires removal by undoing the two securing screws.



3. Position the wheel brackets, so that the offset edge is facing down and attach the castors using the washers and nuts provided. Tighten firmly.



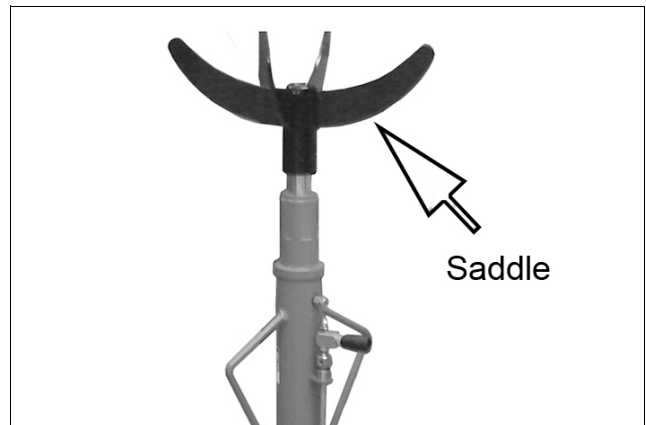
4. Lay the column on its side, and bolt on the two wheel bracket assemblies, with the castors facing downwards ensuring the bracket sits over the locating peg. Use the two bolts and washers. Loosely tighten the bolts, but DO NOT fully tighten at this stage.



5. Raise the jack to the upright position, resting on its castors and ensure it is on firm level ground.

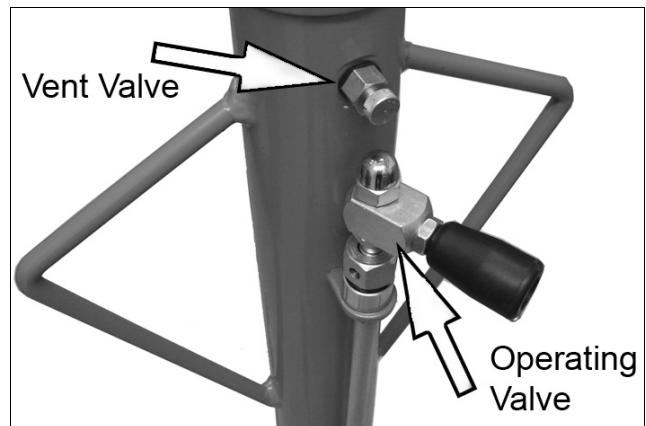
6. Using a set-square, and testing in two directions at 90° to each other, ensure the column is vertical. When satisfied, tighten the column securing bolts fully.

7. Place the saddle on top of the ram.



8. Loosen the vent valve by hand.

- This will allow air to be vented when the ram is descending.



**NOTE:S**

During transit or storage, it is possible that an air pocket may have developed within the hydraulic ram, and the ram action may therefore appear to be 'spongy'. As the ram is self bleeding, any air will be dispelled via the vent valve and the ram action normalised, by raising and lowering the column a few times while not under load.

If the column does not reach its full height, the ram oil level may require topping up, as described in the Maintenance section.

---

# OPERATING INSTRUCTIONS

---



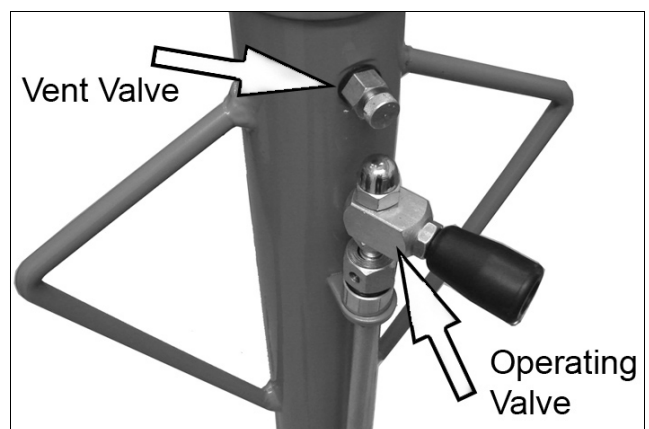
**WARNING: BEFORE LIFTING, ENSURE THE SAFETY PRECAUTIONS ARE STRICTLY FOLLOWED. NO RESPONSIBILITY CAN BE ACCEPTED FOR INCORRECT USE OF THE JACK**

---

1. Ensure the vehicle is in a safe state as mentioned in the safety precautions, ensuring the ground on which the jack is to operate is level and solid.
2. Position the jack saddle under the vehicle transmission.

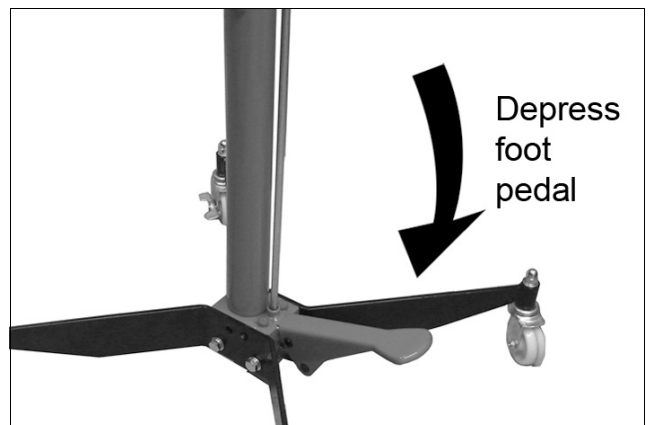
## RAISING THE COLUMN

Turn the operating valve handle clockwise until the valve is fully closed.



Pump the foot lever to reach the desired height.

Ensure the centre of gravity of the load is completely centred about the saddle before the full load is taken, and secure the load with chains if necessary.



## LOWERING THE COLUMN

With the load fully secured, turn the operating handle VERY SLOWLY anticlockwise.

- The more the handle is turned, the greater the rate of descent.

**Be extremely careful when lowering heavy loads.**



**WARNING: ALWAYS LOWER IN A SLOW AND CONTROLLED MANNER, AND THAT THERE ARE NO OBSTACLES IN THE PATH OF THE LOAD'S DESCENT.**

---

---

# MAINTENANCE

---

***IMPORTANT: Only fully qualified personnel should attempt maintenance or repair.***

1. Always visually inspect the jack before use, to ensure that all parts are correctly locate and secure. Check for hydraulic leaks, signs of damage or worn parts and check the castors for damage. **Do not use the jack unless it is perfectly serviceable.**
2. A slight dampness on the ram is normal, but where leakage is apparent, the ram seals must be renewed by your Clarke dealer.
3. The jack should be fully inspected annually as follows:
  - Check for cracks and deformation of components.
  - Check castors to ensure they move freely without undue wear to their bores, and that the wheels are not cracked or damaged in any way.
  - Check the ram operation and top up the oil level. (see below).
  - Remove completely, any rust or corrosion and repaint to prevent further corrosion.
  - Ensure that all decals and warning notices are in place and legible.
4. After use, wherever possible, store the jack with the ram in its lowest position. This not only relieves the hydraulic ram, but also prevents any possibility of corrosion to the ram.
5. Do not leave the jack in the open, exposed to the elements. Keep under cover.
6. If the jack is transported in the horizontal position, the vent valve should tightened.
  - DO NOT remove the plastic caps at the base of the jack, labelled "Do not Adjust".

## TOPPING UP THE OIL

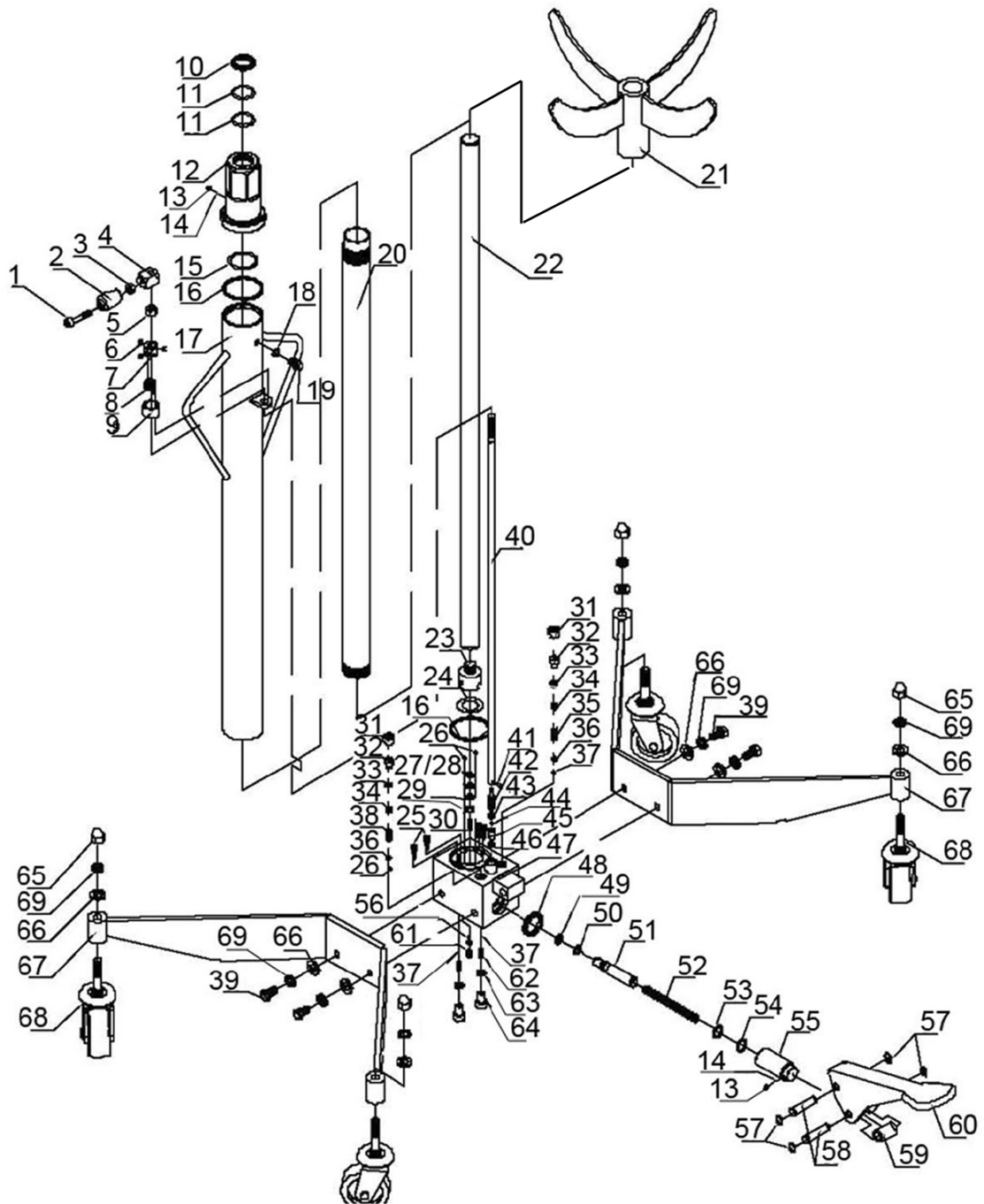
It may be necessary from time to time to top up the hydraulic ram oil level. Proceed as follows.

- Lower the ram to its lowest position, and remove the vent valve.
- Using an oil can, slowly top up the oil until it begins to overflow. When the excess oil has completely drained off, replace the vent valve.

***NOTE: Top up using Clarke hydraulic oil (Part Number 3050830).***



# PARTS LIST & DIAGRAM



No	Description
1	Bolt M8 x 40
2	Release Handle
3	Nut M8
4	Base for Handle
5	Nut M10

No	Description
36	Base for Steel Ball
37	Steel Ball
38	Spring
39	Bolt M12 x 25
40	Connecting Rod

No	Description
6	Screw M6 x 6
7	Permanent Seat for Spring
8	Spring
9	Spring Sleeve
10	Dust Ring
11	O Ring
12	Cover
13	Screw M6 x 5
14	Steel Ball
15	O-Ring
16	Washer
17	Reservoir
18	Seal Ring
19	Air Vent Screw
20	Cylinder
21	Saddle
22	Piston Rod
23	Piston
24	Washer
25	Filter
26	Steel Ball
27	Hole Ring Shaft
28	Filter
29	Valve Core
30	Spring
31	Screw Protector
32	Screw
33	O-Ring
34	Screw
35	Spring

No	Description
41	Pin
42	Valve Rod
43	O-Ring
44	Steel Ball
45	Release Valve Base
46	Washer
47	Base
48	PTFE Washer
49	O-Ring
50	PTFE Washer
51	Small Piston
52	Spring
53	PTFE Washer
54	O-Ring
55	Large Piston
56	Steel Ball
57	Circlip
58	Pivot Pin
59	Spacing Bush
60	Foot Pedal
61	Steel Ball
62	Spring
63	Copper Ring
64	Screw
65	Nut M12
66	Washer 12 dia
67	Leg
68	Castors
69	Lock Washer

# DECLARATION OF CONFORMITY



Hemroll Street, Epping, Essex CM16 4LG

## DECLARATION OF CONFORMITY

This is an important document and should be retained.

We hereby declare that this product(s) complies with the following statutory requirement(s):

*Supply of Machinery (Safety) Regulations 2008*

The following standards have been applied to the product(s):

EN 1494:2000 + A1:2008

The technical documentation required to demonstrate that the product(s) meet(s) the requirement(s) of the aforementioned legislation has been compiled and is available for inspection by the relevant enforcement authorities.

The UKCA mark was first applied in: 2022

Product Description: 0.3T Transmission Jack  
Model number(s): CTJ30  
Serial / batch Number: N/A  
Date of Issue: 22/09/2022

Signed:

J.A. Clarke  
Director



Fitzwilliam Hall, Fitzwilliam Place, Dublin 2

## DECLARATION OF CONFORMITY

This is an important document and should be retained.

We hereby declare that this product(s) complies with the following directive(s):

2006/42/EC *Machinery Directive*

The following standards have been applied to the product(s):

EN 1494:2000 + A1:2008

The technical documentation required to demonstrate that the product(s) meet(s) the requirement(s) of the aforementioned directive(s) has been compiled and is available for inspection by the relevant enforcement authorities.

The CE mark was first applied in: 2014

Product Description: 0.3T Transmission Jack  
Model number(s): CTJ30  
Serial / batch Number: N/A  
Date of Issue: 22/09/2022

Signed:

J.A. Clarke  
Director

# A SELECTION FROM THE VAST RANGE OF

# Clarke®

## QUALITY PRODUCTS



**AIR COMPRESSORS**  
From DIY to industrial, Plus air tools, spray guns and accessories.

**GENERATORS**  
Prime duty or emergency standby for business, home and leisure.

**POWER WASHERS**  
Hot and cold, electric and engine driven - we have what you need

**WELDERS**

Mig, Arc, Tig and Spot.  
From DIY to auto/industrial.

**METALWORKING**  
Drills, grinders and saws for DIY and professional use.

**WOODWORKING**  
Saws, sanders, lathes, mortisers and dust extraction.

**HYDRAULICS**  
Cranes, body repair kits, transmission jacks for all types of workshop use.

**WATER PUMPS**  
Submersible, electric and engine driven for DIY, agriculture and industry.

**POWERTOOLS**  
Angle grinders, cordless drill sets, saws and sanders.

**STARTERS/CHARGERS**  
All sizes for car and commercial use.



## PARTS & SERVICE: 0208 988 7400

**Parts Enquiries**  
[Parts@clarkeinternational.com](mailto:Parts@clarkeinternational.com)

**Servicing & Technical Enquiries**  
[Service@clarkeinternational.com](mailto:Service@clarkeinternational.com)

SALES: UK 01992 565333 or Export 00 44 (0)1992 565335

**Clarke® INTERNATIONAL** Hemnall Street, Epping, Essex CM16 4LG  
[www.clarkeinternational.com](http://www.clarkeinternational.com)